

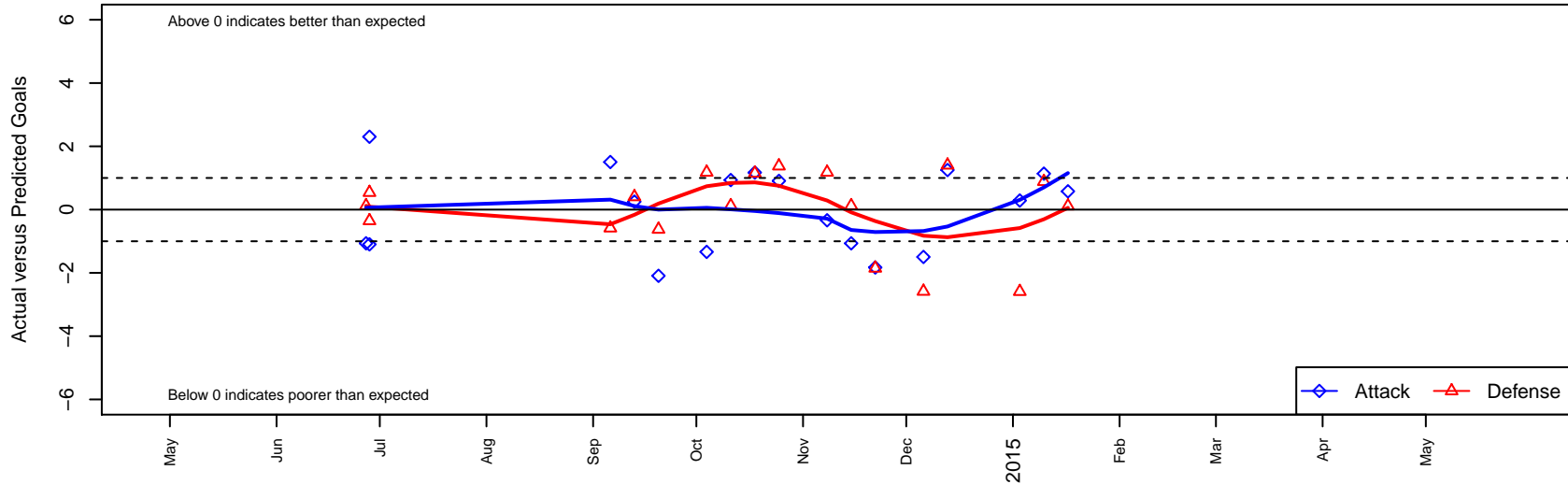
PSA Force Black B00

Pilchuck Soccer Alliance
 Marysville, WA
 B00 total strength=882
 attack=2.49 defense=0.71
 fall league = NPSL B14D3

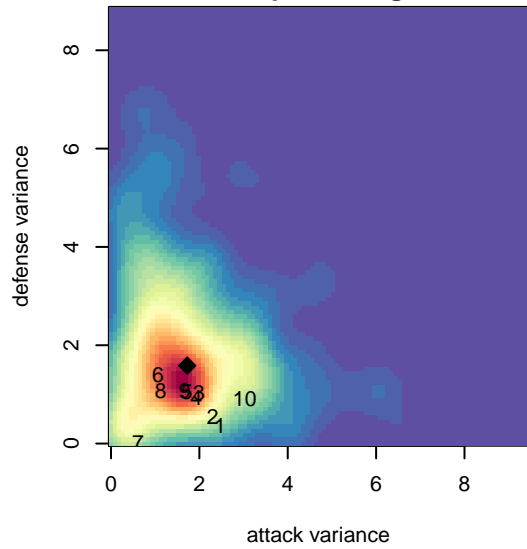
alt names used:
 45 PSA Force Boys 00
 Force BU00 – Marysville – Boys Under 14
 PSA B00 Force

Venues played:
 2014 Baker Blast COPA U14
 2014 NPSL B14D3
 2014 Founders Cup B00

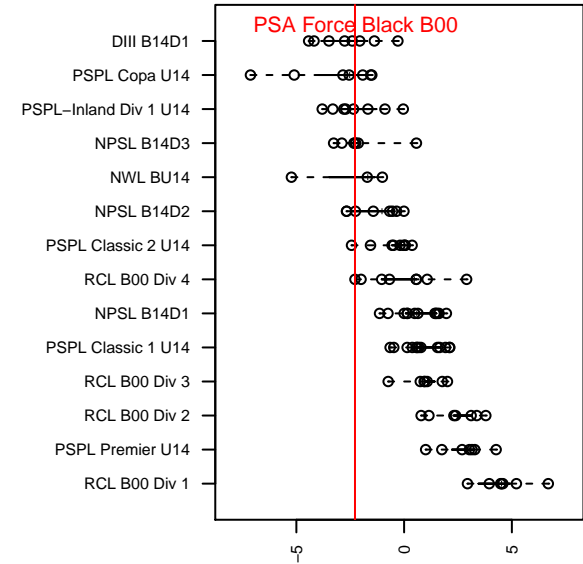
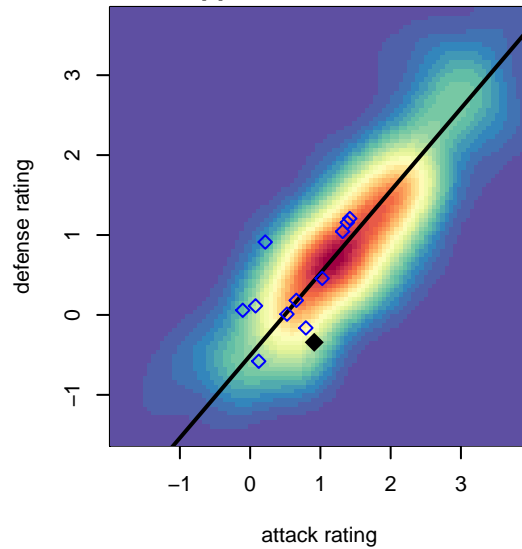
PSA Force Black B00
 Dots are actual minus expected GF (blue circles) and GA (red triangles).
 Blue line is smoothed change in attack strength. Red is smoothed change in defense strength.



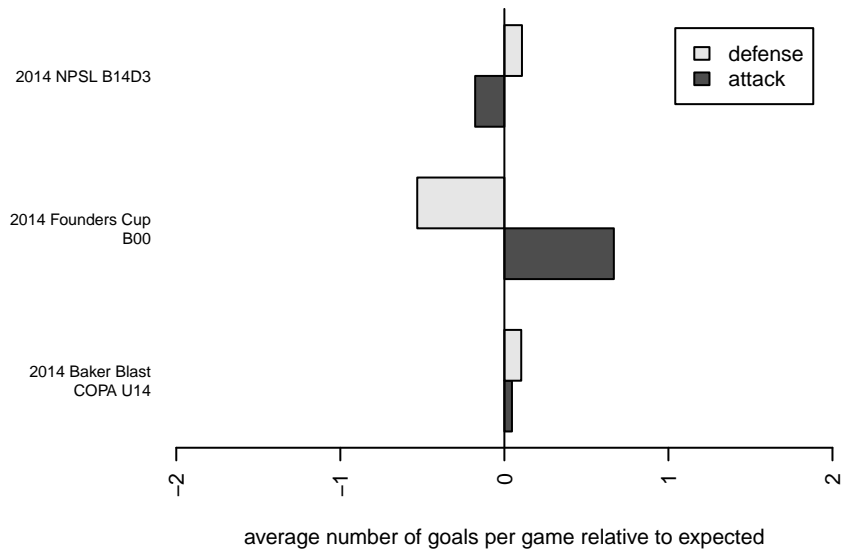
**attack and defense variance (black dot)
relative to other teams
and top 10 in region**



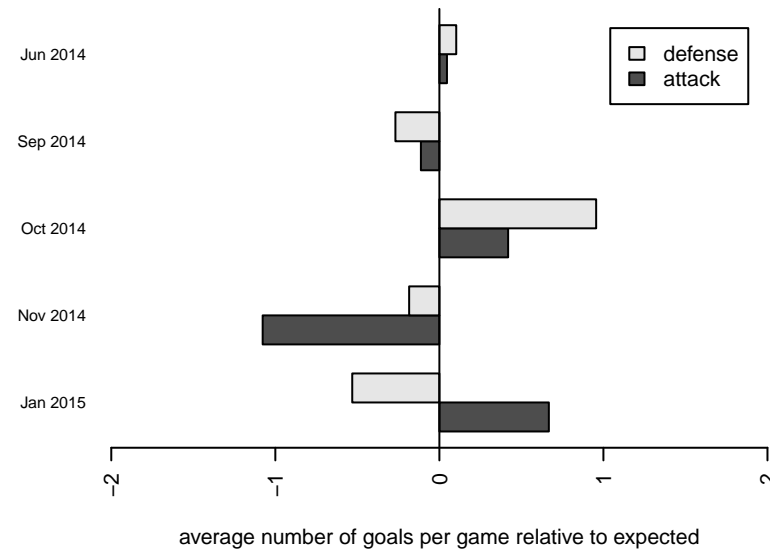
**attack and defense rating
relative to others at age
and all opponents in last 13 months**



Performance relative to 13 month average



Performance relative to 13 month average



| date | home | | away | | venue | pred.home | pred.away |
|-------------|--------------------------------|---|---------------------------|---|---------------------------|------------------|------------------|
| 2015-01-17 | PSA Force Black B00 | 2 | Seattle United W Blue B00 | 4 | 2014 Founders Cup B00 | 1.42 | 4.11 |
| 2015-01-10 | Crossfire Select Greenwalt B00 | 5 | PSA Force Black B00 | 2 | 2014 Founders Cup B00 | 5.88 | 0.86 |
| 2015-01-03 | NSC Impact B00 | 8 | PSA Force Black B00 | 1 | 2014 Founders Cup B00 | 5.41 | 0.71 |
| 2014-12-13 | PSA Force Black B00 | 2 | SCORE Eagles Red B00 | 4 | 2014 NPSL B14D3 | 0.75 | 5.40 |
| 2014-12-06 | Newport FC Cosmos B00 | 5 | PSA Force Black B00 | 1 | 2014 NPSL B14D3 | 2.42 | 2.50 |
| 2014-11-22 | Kent United White B00 | 5 | PSA Force Black B00 | 1 | 2014 NPSL B14D3 | 3.15 | 2.83 |
| 2014-11-15 | PSA Force Black B00 | 1 | Whatcom Rangers White B00 | 2 | 2014 NPSL B14D3 | 2.07 | 2.12 |
| 2014-11-08 | PSA Force Black B00 | 2 | ISC Gunners Select B00 | 0 | 2014 NPSL B14D3 | 2.34 | 1.18 |
| 2014-10-25 | PSA Force Black B00 | 3 | Sky River Select B00 | 0 | 2014 NPSL B14D3 | 2.09 | 1.38 |
| 2014-10-18 | PSA Force Black B00 | 4 | Kent United White B00 | 2 | 2014 NPSL B14D3 | 2.83 | 3.15 |
| 2014-10-11 | Whatcom Rangers White B00 | 2 | PSA Force Black B00 | 3 | 2014 NPSL B14D3 | 2.12 | 2.07 |
| 2014-10-04 | ISC Gunners Select B00 | 0 | PSA Force Black B00 | 1 | 2014 NPSL B14D3 | 1.18 | 2.34 |
| 2014-09-20 | Sky River Select B00 | 2 | PSA Force Black B00 | 0 | 2014 NPSL B14D3 | 1.38 | 2.09 |
| 2014-09-13 | SCORE Eagles Red B00 | 5 | PSA Force Black B00 | 1 | 2014 NPSL B14D3 | 5.40 | 0.75 |
| 2014-09-06 | PSA Force Black B00 | 4 | Newport FC Cosmos B00 | 3 | 2014 NPSL B14D3 | 2.50 | 2.42 |
| 2014-06-28 | PoCo Rumbatz 2001B | 2 | PSA Force Black B00 | 0 | 2014 Baker Blast COPA U14 | 1.65 | 1.10 |
| 2014-06-28 | PSA Force Black B00 | 7 | Kamloops Blaze 2001B | 1 | 2014 Baker Blast COPA U14 | 4.70 | 1.54 |
| 2014-06-27 | PSA Force Black B00 | 1 | Whatcom Rangers White B00 | 2 | 2014 Baker Blast COPA U14 | 2.07 | 2.12 |